

DENDÉRAH

DESCRIPTION GÉNÉRALE

DU

GRAND TEMPLE DE CETTE VILLE

PAR

AUGUSTE MARIETTE-BEY

OUVRAGE PUBLIÉ SOUS LES AUSPICES

DE

S. A. ISMAIL-PACHA

KHÉDIVE D'ÉGYPTE

SUPPLÉMENT

AUX PLANCHES

PARIS

LIBRAIRIE A. FRANCK

F. VIEWEG, PROPRIÉTAIRE

67, Rue Richelieu

—
1874.

ALEXANDRIE. — Imprimerie Française A. MOURÈS, Square Ibrahim.

DENDÉRAH

DENDÉRAH

DESCRIPTION GÉNÉRALE

DU

GRAND TEMPLE DE CETTE VILLE

PAR

AUGUSTE MARIETTE-BEY

OUVRAGE PUBLIÉ SOUS LES AUSPICES

DE

S. A. ISMAIL-PACHA

KHÉDIVE D'ÉGYPTE

SUPPLÉMENT

AUX PLANCHES

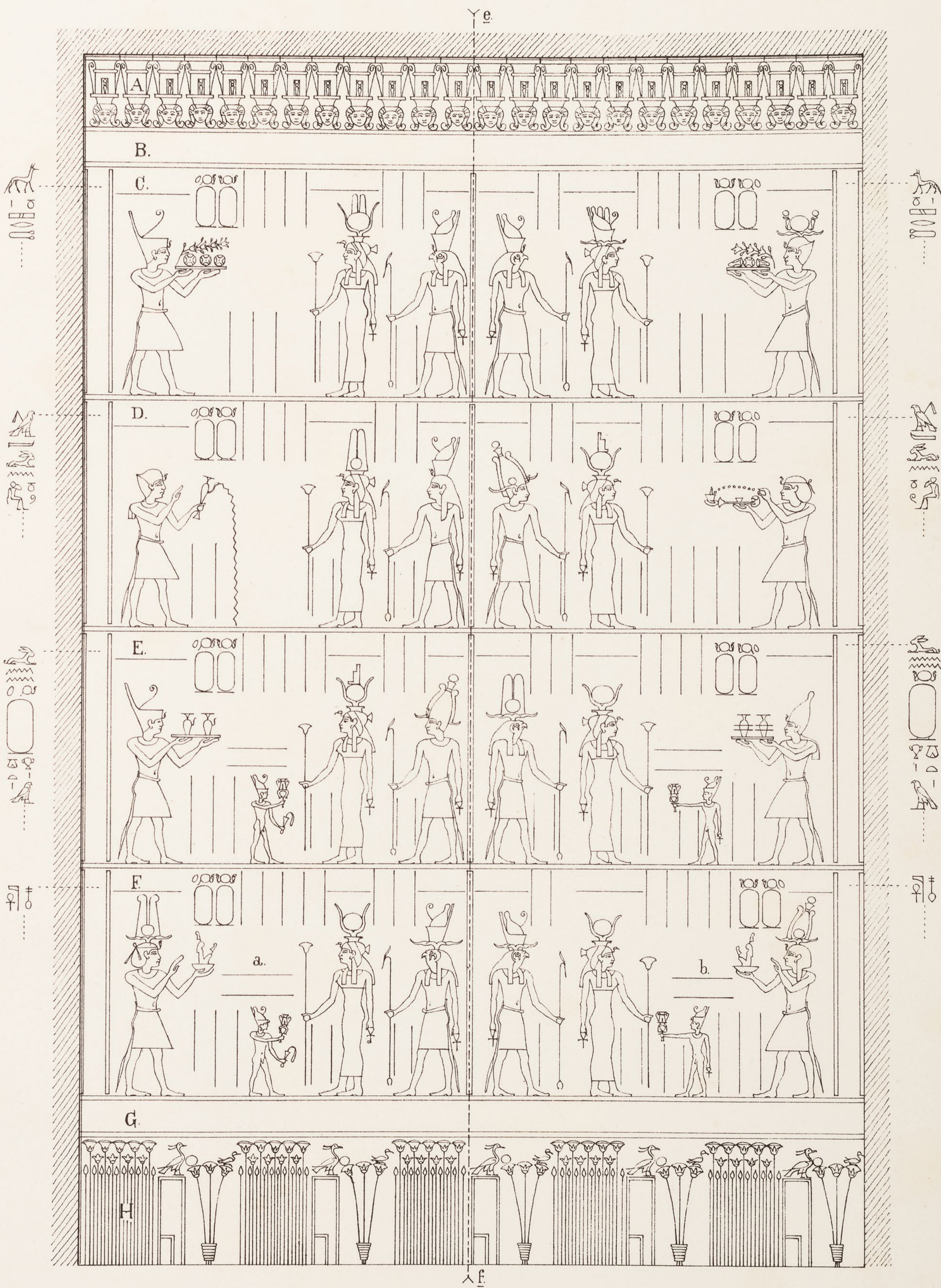
PARIS

LIBRAIRIE A. FRANCK

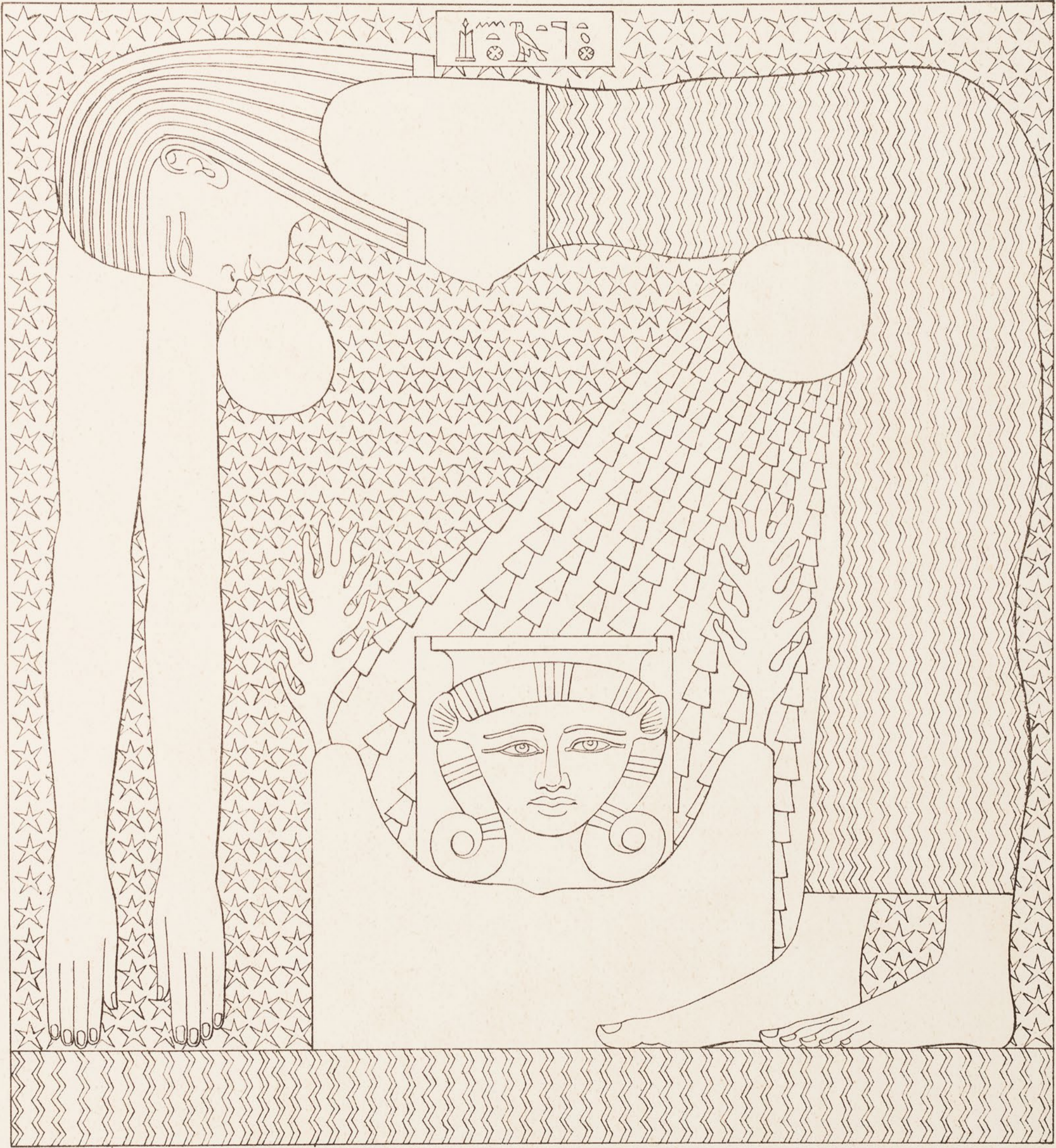
F. VIEWEG, PROPRIÉTAIRE

67, Rue Richelieu

—
1874.

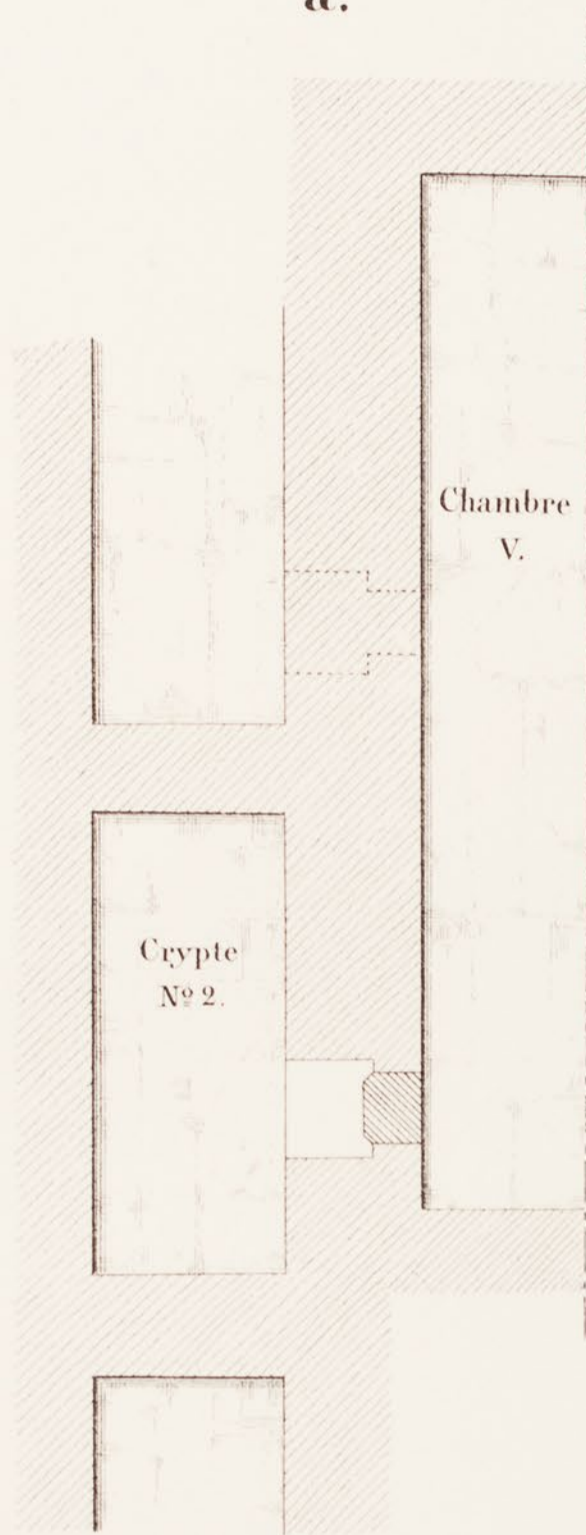


COUPE LONGITUDINALE D'UNE CHAMBRE. PAROI DU FOND

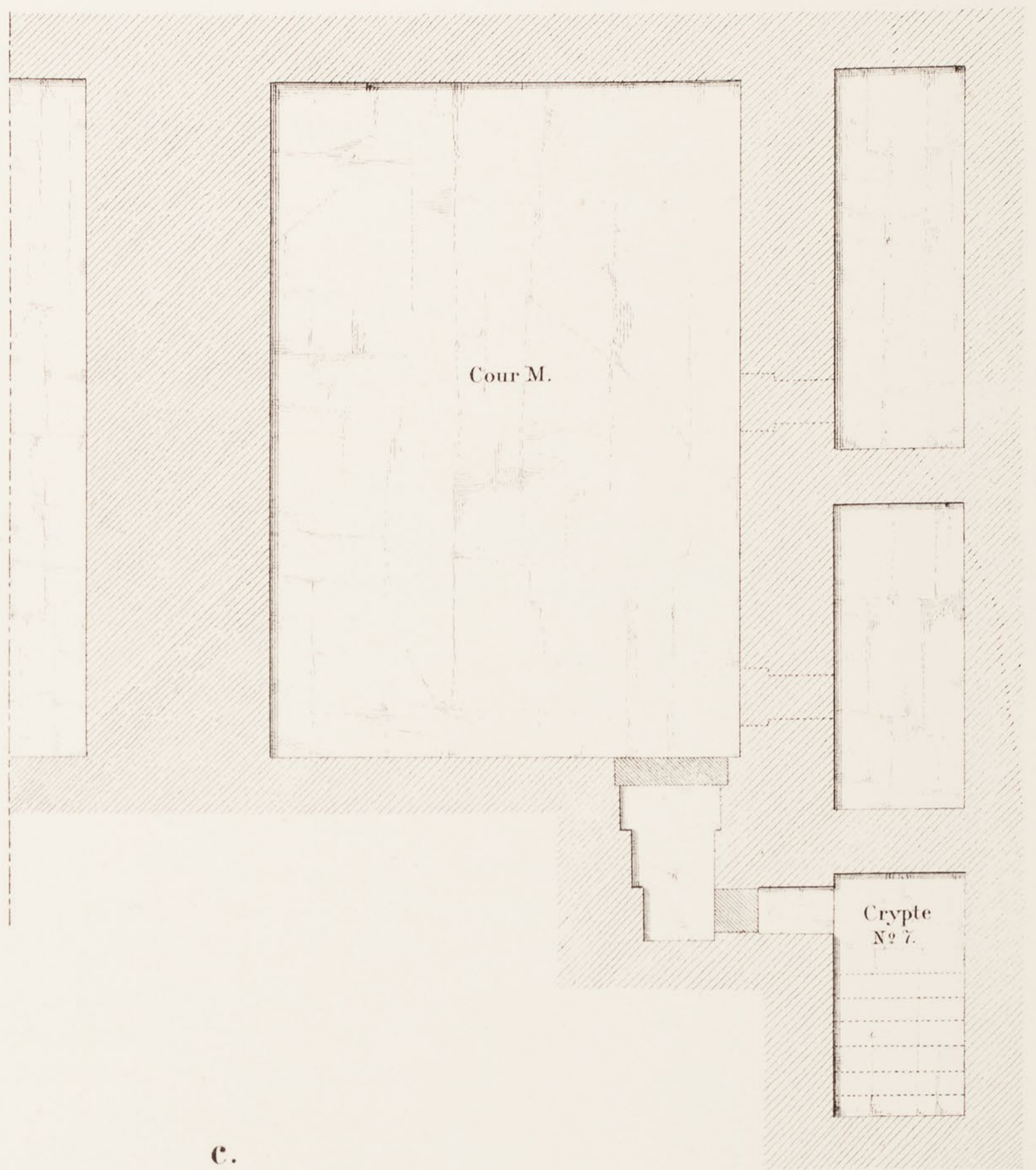


Plafond de la Chapelle L.

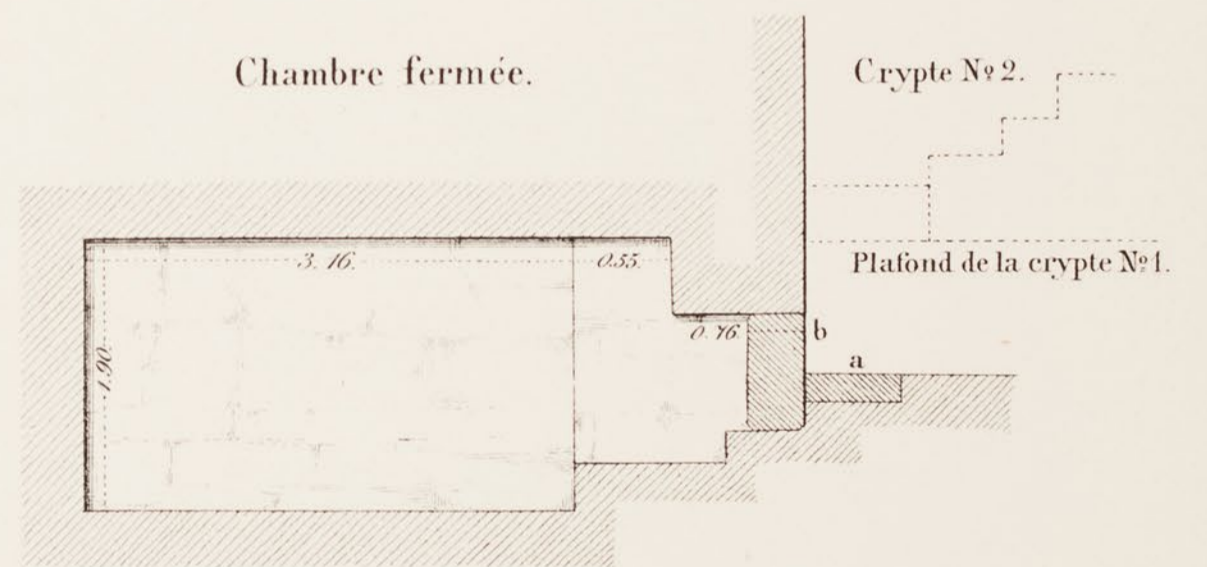
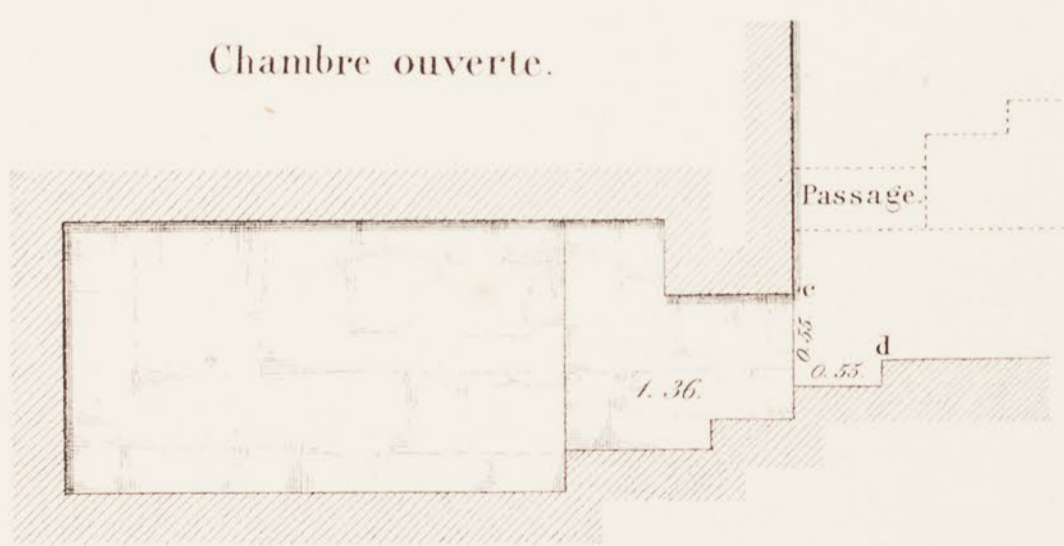
a.



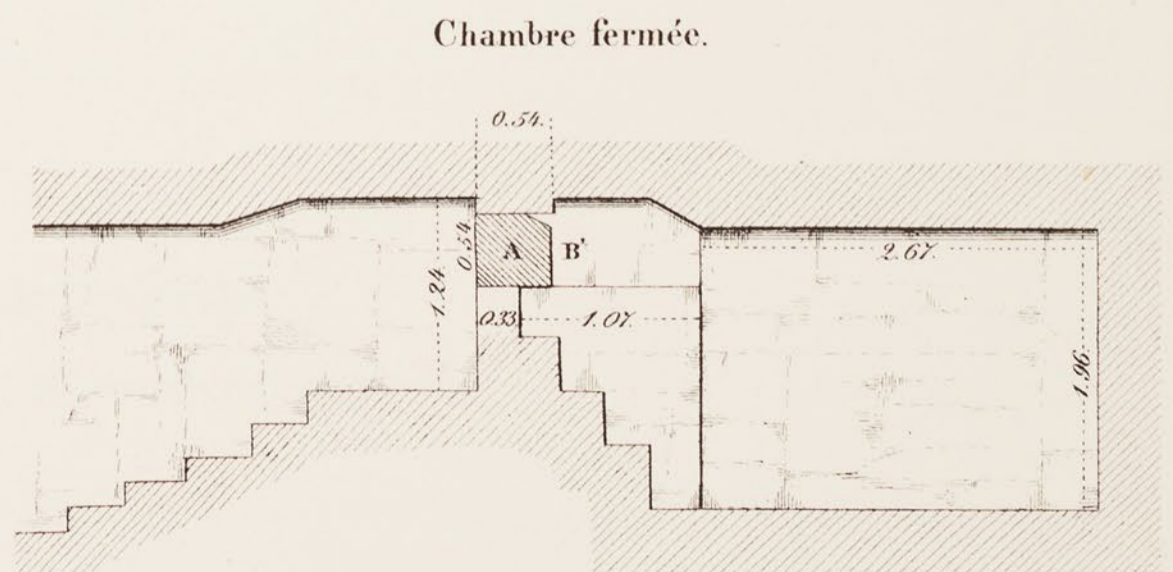
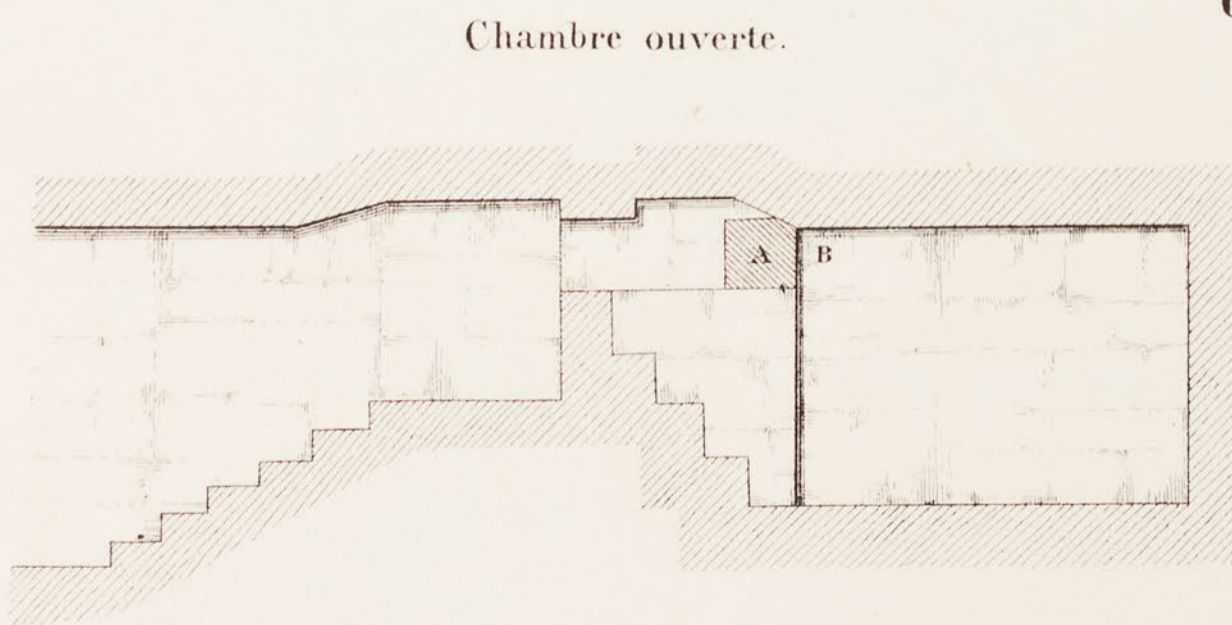
b.



c.



d.

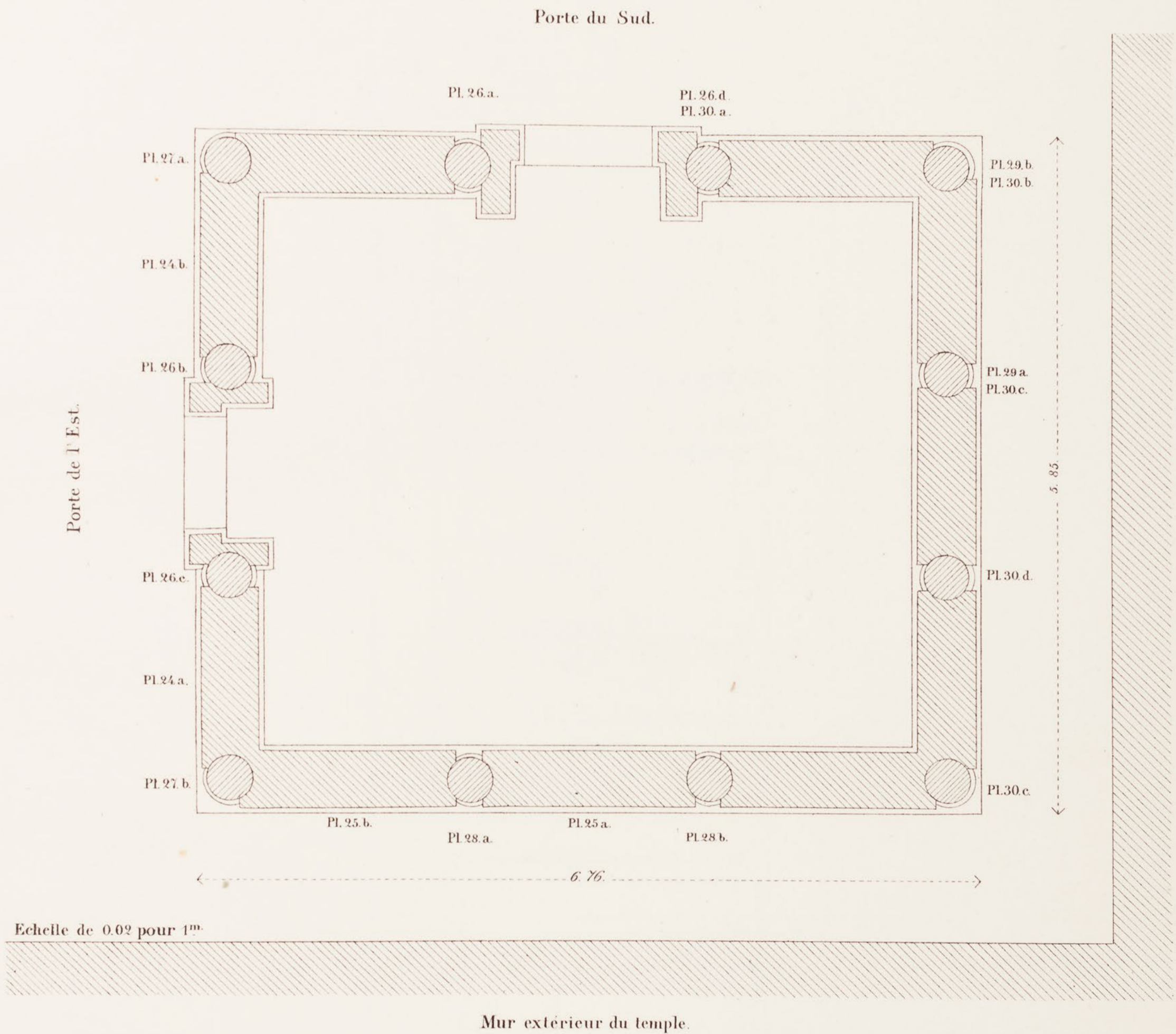


GRAND TEMPLE.

Cryptes.

DENDERAH

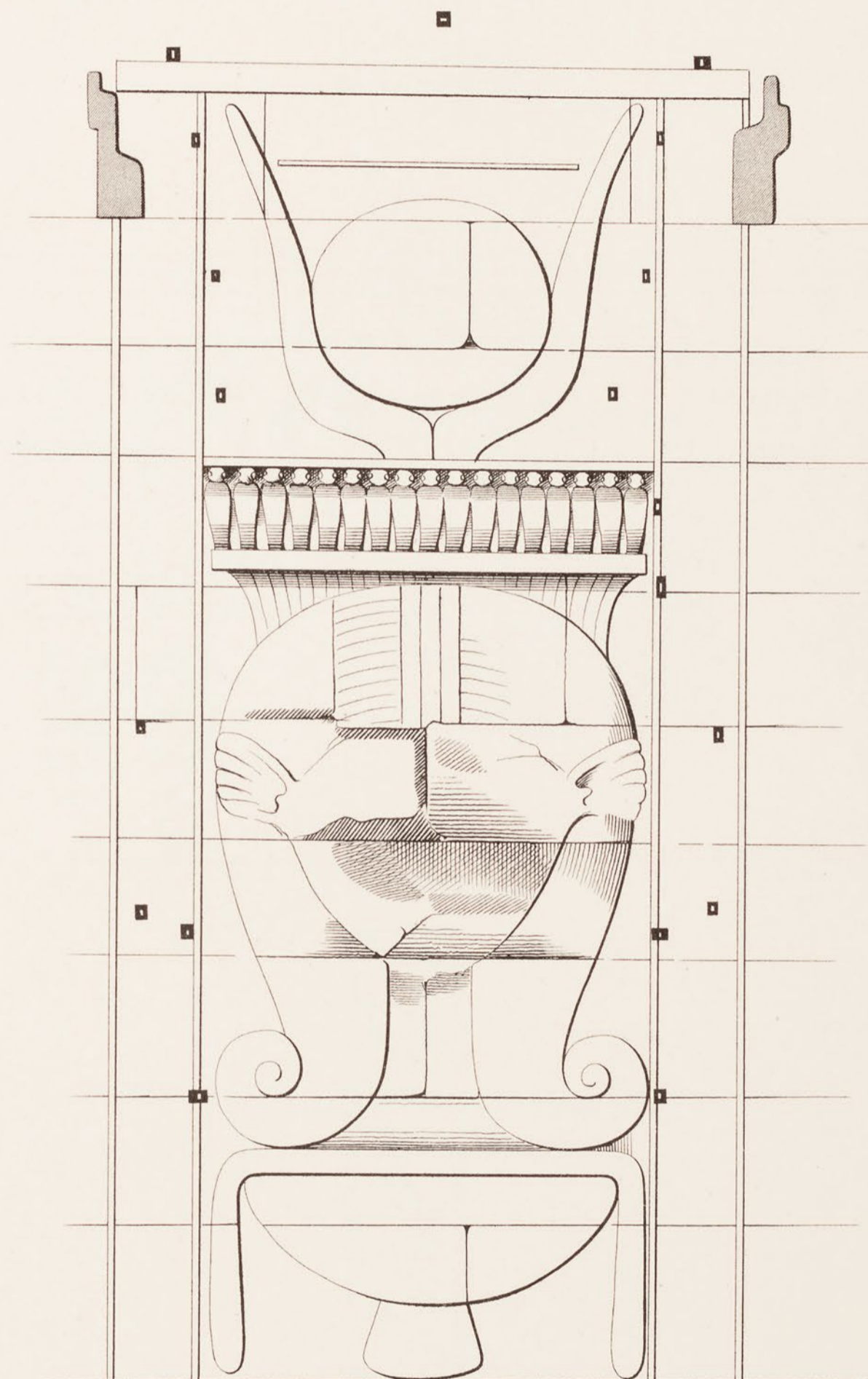
PL. F



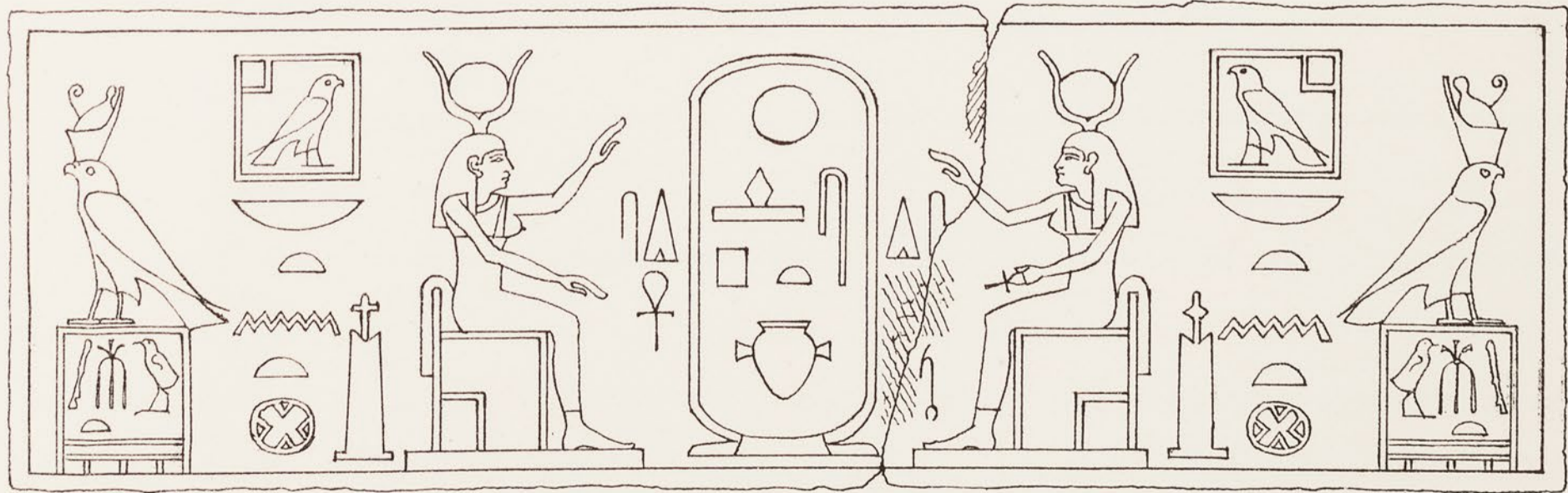
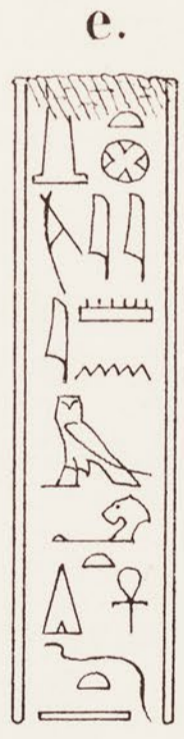
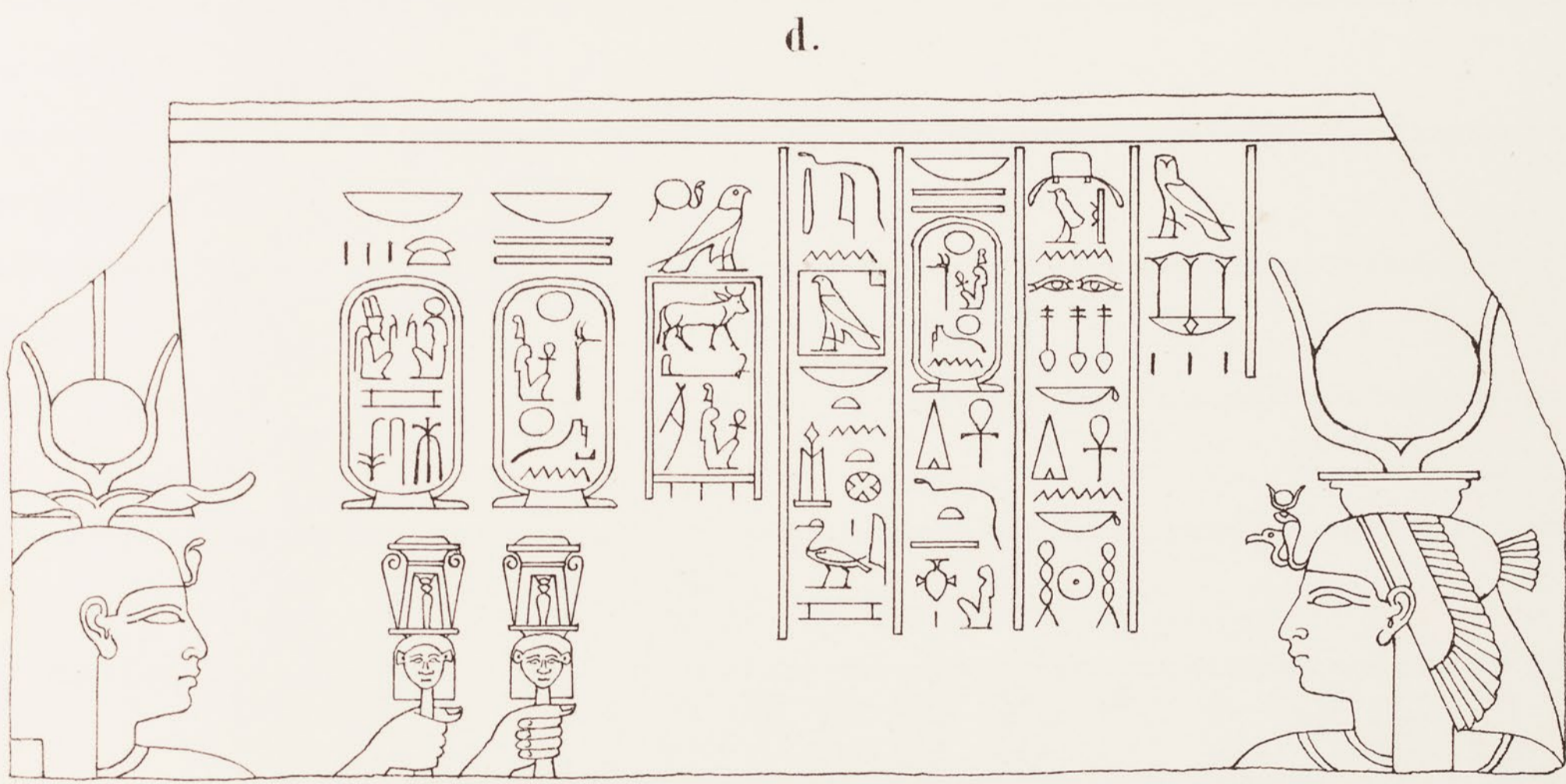
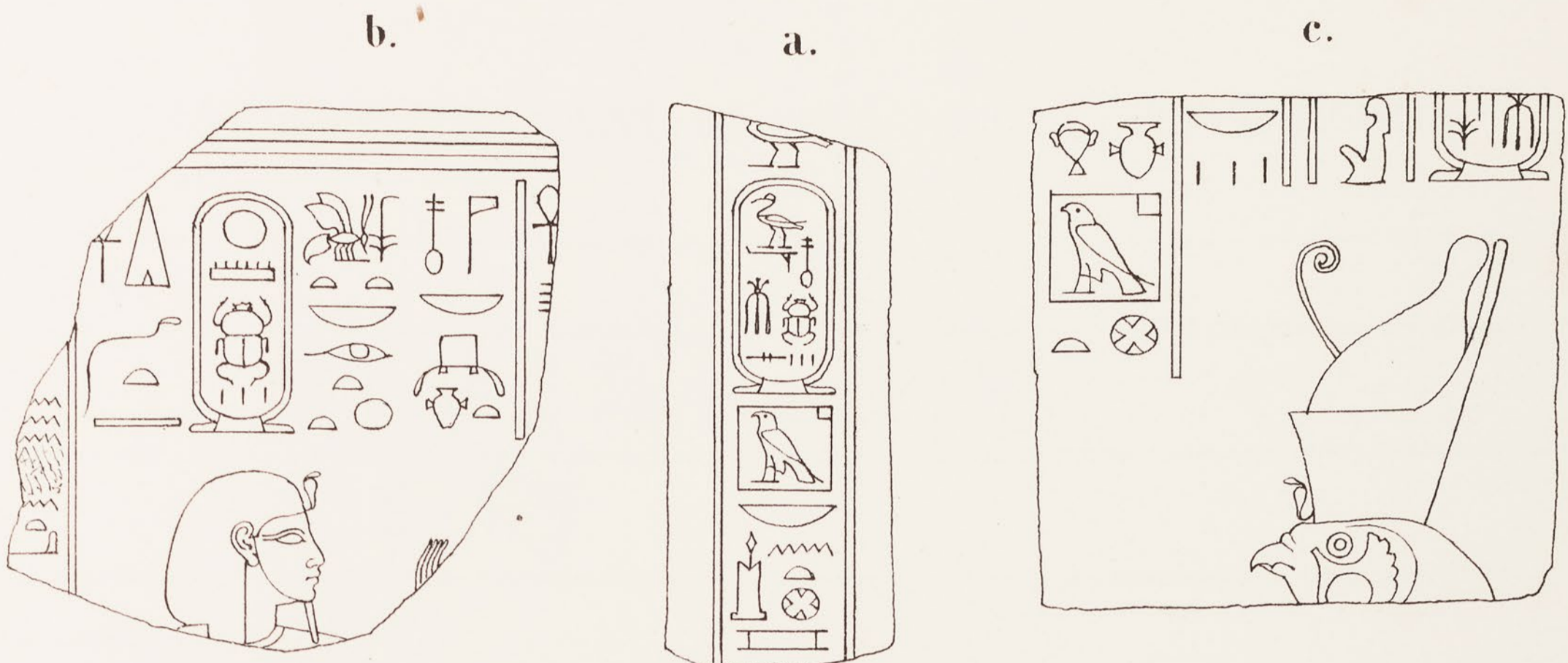
Chapelle de la terrasse.

Plan pour montrer la place des inscriptions.

DENDERAH

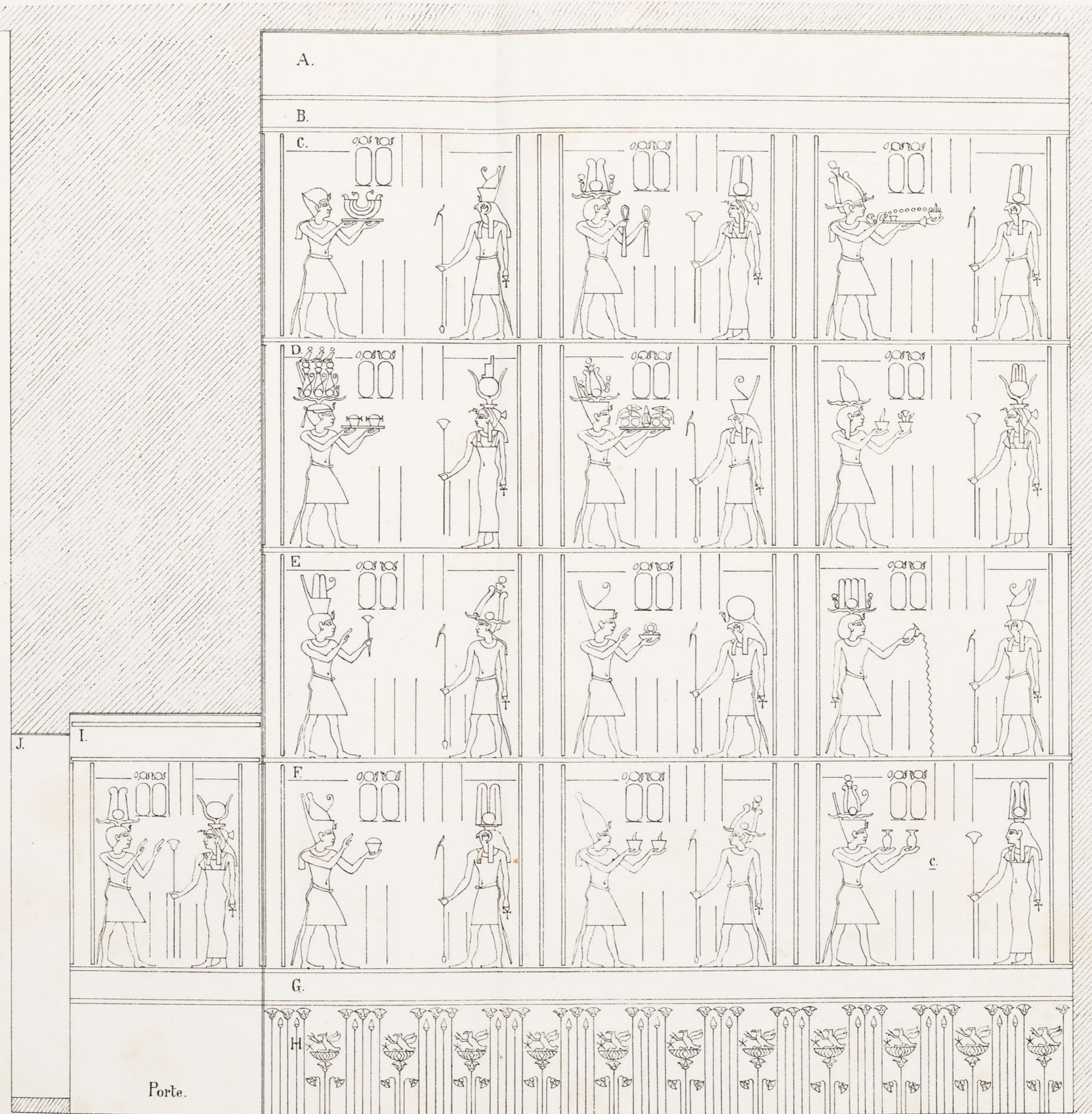


Extérieur du Temple, côté ouest



GRAND TEMPLE.
(Appendice.)

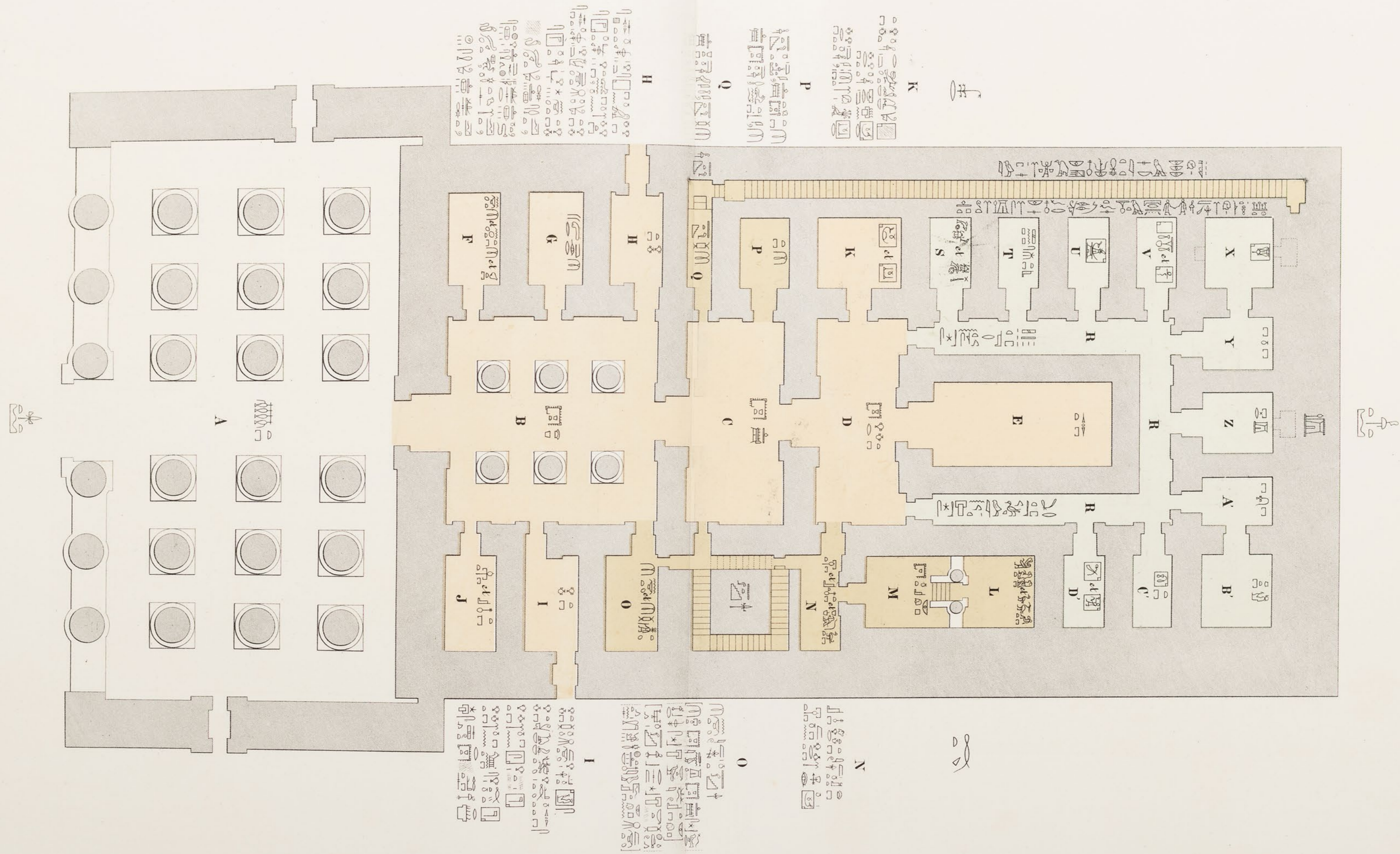
- A. Frise.
- B. Dédicace de la frise.
- C. Tableaux. 4^e registre.
- D. Tableaux. 3^e registre.
- E. Tableaux. 2^e registre.
- F. Tableaux. 1^{er} registre.
- G. Dédicace du soubassement.
- H. Soubassement.
- I. Feuillure de la porte.
- J. Epaisseur de la porte.



COUPE LONGITUDINALE D'UNE CHAMBRE. PAROI GAUCHE.

DENDERAH

T.I. Pl. 5.



GRAND TEMPLE.

Lith. V. Penasson, Alexandrie.